

## Introduction

- Estuarine habitats throughout coastal regions in Florida have experienced high rates of habitat loss, alteration, and degradation because of...



- Anthropogenic changes in estuaries around Florida caused loss of mangrove wetlands, salt marshes, oyster reefs, and seagrass beds.
- Loss of these habitats decreases resiliency of coastal regions and increases susceptibility to erosion, flooding, and sea level rise.
- To reverse habitat loss, restoration practitioners in Florida have undertaken a variety of restoration activities to recover and enhance estuarine systems, including...

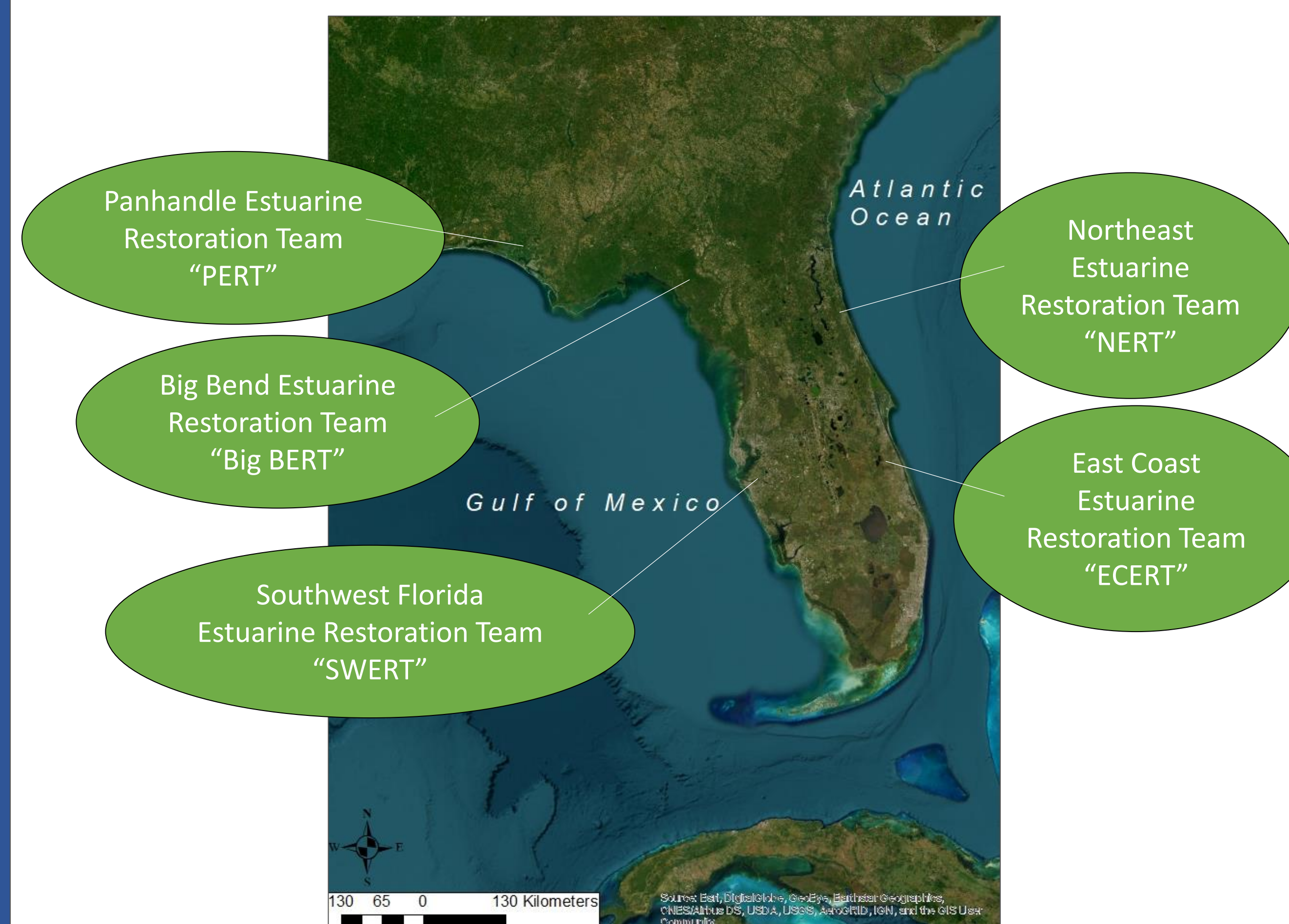


## Purpose of Project

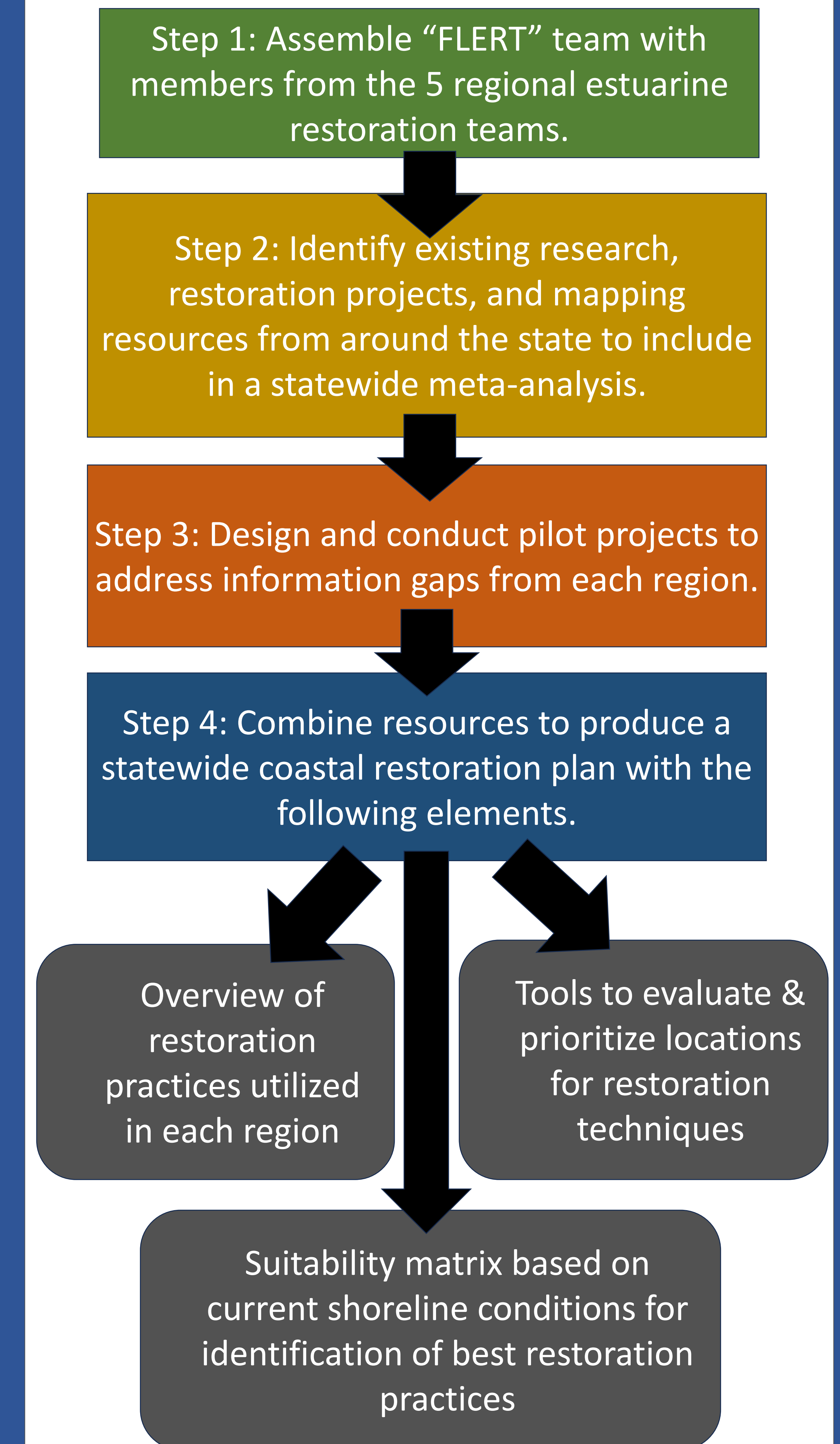
To develop a statewide coastal restoration plan with tools for identifying and prioritizing coastal habitats in need of restoration and support implementation of successful restoration methods

## Scope of Project

- The Statewide Coastal Restoration Plan will be developed through a collaboration between
  - University of Central Florida (UCF)
  - RES
  - Estuarine Restoration Teams (ERTs)
- ERTs are comprised of restoration practitioners in 5 coastal regions in Florida, bringing together a wealth of knowledge and expertise about Florida's coastal systems



## Next Steps...



## Contact Information

Please send questions, comments, and feedback to Melinda Donnelly at [Melinda.Donnelly@ucf.edu](mailto:Melinda.Donnelly@ucf.edu)

## Acknowledgements

Funding for this project is provided by Office of Resilience and Coastal Protection, Florida Department of Environmental Protection

